

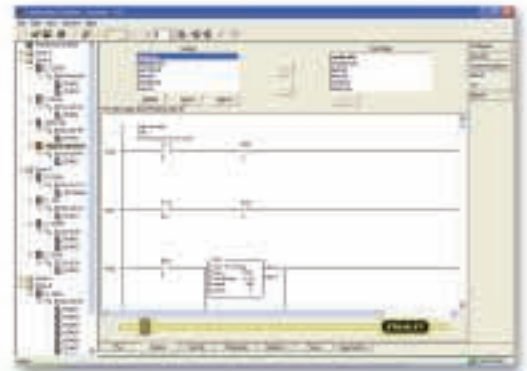
2 CONTROLLERS

Sigma System

The Sigma interface manages as many as 12 Alpha controllers. Soft PLC capability uses one of multiple Fieldbus technologies. As a DeviceNet Master with Ladder Logic Engine, it can manage an entire workstation. Optional Tool Logic Control in Fastening Toolbox Deluxe software simplifies ladder logic programming.

Communications capabilities include Ethernet, multiple Fieldbus technologies, Serial and Parallel ports, plus 24VDC I/O.

As a DeviceNet master, it is capable of integrating thousands of ODVA compatible peripheral products, including expansion I/O, socket trays, barcode scanners, touch screens, limit switches, light screens, and many more.



Ladder Logic Engine

Executes industry-standard ladder logic. Soft PLC built into controller. No need to purchase one separately.



Other DC electric assembly systems typically require a PLC control interface to control a workstation. Stanley's Sigma and Gamma systems with integral soft PLC can control the entire workstation, saving capital investment of \$5-12k per station.



Operator Feedback

Gamma screen messages and Epsilon light stacks show assembly results.

Gamma System



The Gamma controller offers the fusion of a soft PLC, the PC, and the torque controller in a single, scalable, flexible, highly cost-effective package for one or two spindle workstations.

Communications capabilities including Ethernet, multiple Fieldbus technologies, Serial and Parallel ports, plus 24VDC I/O.

Data Input

Operator places work piece in position and scans a barcode. Gamma decodes barcode scan and confirms that the correct parts are in place.



Traceability

The sticker contains integrated information, including manufacturing plant, station, and operator identification. Production information including part style, option content, and date of assembly. Plus summary and/or detailed information regarding the assembly process, even non-fastening related steps.



PLC Capability

Gamma or Sigma initiates assembly sequence for the part in station, prompts the operator through each step, and signals conformance at each step. For threaded fasteners, the Gamma controls socket selection and specifications.

Documentation

On completion, Gamma prints a traceability sticker for placement on the work piece.